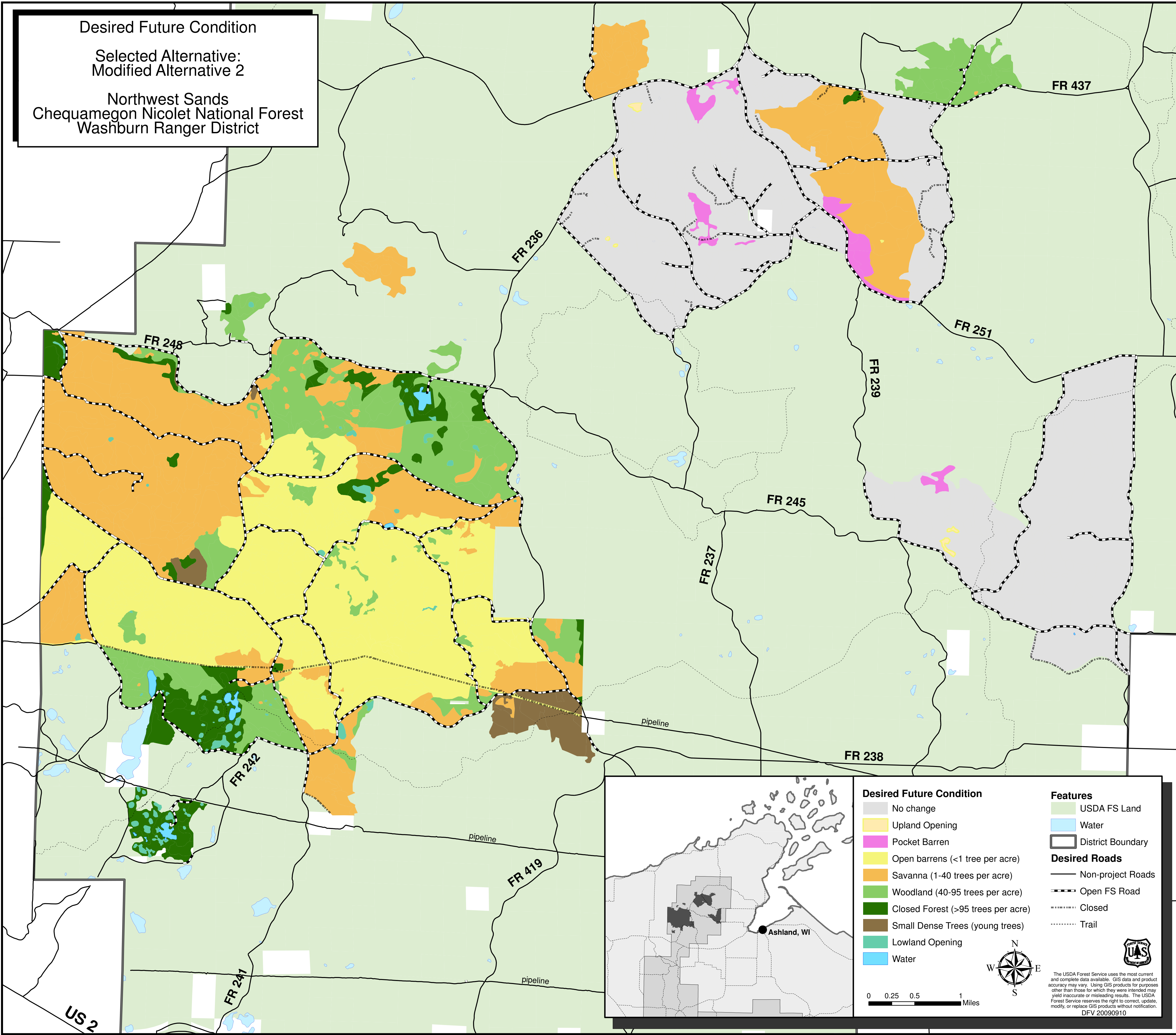


Desired Future Condition

Selected Alternative:
Modified Alternative 2

Northwest Sands
Chequamegon Nicolet National Forest
Washburn Ranger District



Desired Future Condition

- No change
- Upland Opening
- Pocket Barren
- Open barrens (<1 tree per acre)
- Savanna (1-40 trees per acre)
- Woodland (40-95 trees per acre)
- Closed Forest (>95 trees per acre)
- Small Dense Trees (young trees)
- Lowland Opening
- Water

Features

- USDA FS Land
- Water
- District Boundary

Desired Roads

- Non-project Roads
- Open FS Road
- Closed
- Trail

0 0.25 0.5 1 Miles



The USDA Forest Service uses the most current and complete data available. GIS data and product accuracy may vary. Using GIS products for purposes other than those for which they were intended may yield inaccurate or misleading results. The USDA Forest Service reserves the right to correct, update, modify, or replace GIS products without notification.
DFV 20090910

US 2